



## B-R Controls Pty Ltd

Unit 3, 95 Hunter Street  
HORNSBY NSW 2077  
Australia

Telephone: (+61) (02) 9476 2133  
Facsimile: (+61) (02) 9476 2688  
E-mail: mail@brcontrols.com.au  
Website: www.brcontrols.com.au



# DPRn 417 (I<sub>A</sub>TEX) / DPRn 427 (I<sub>A</sub>TEX) Hastelloy C276, Incoloy 825 Density Transducer



## Measuring principle

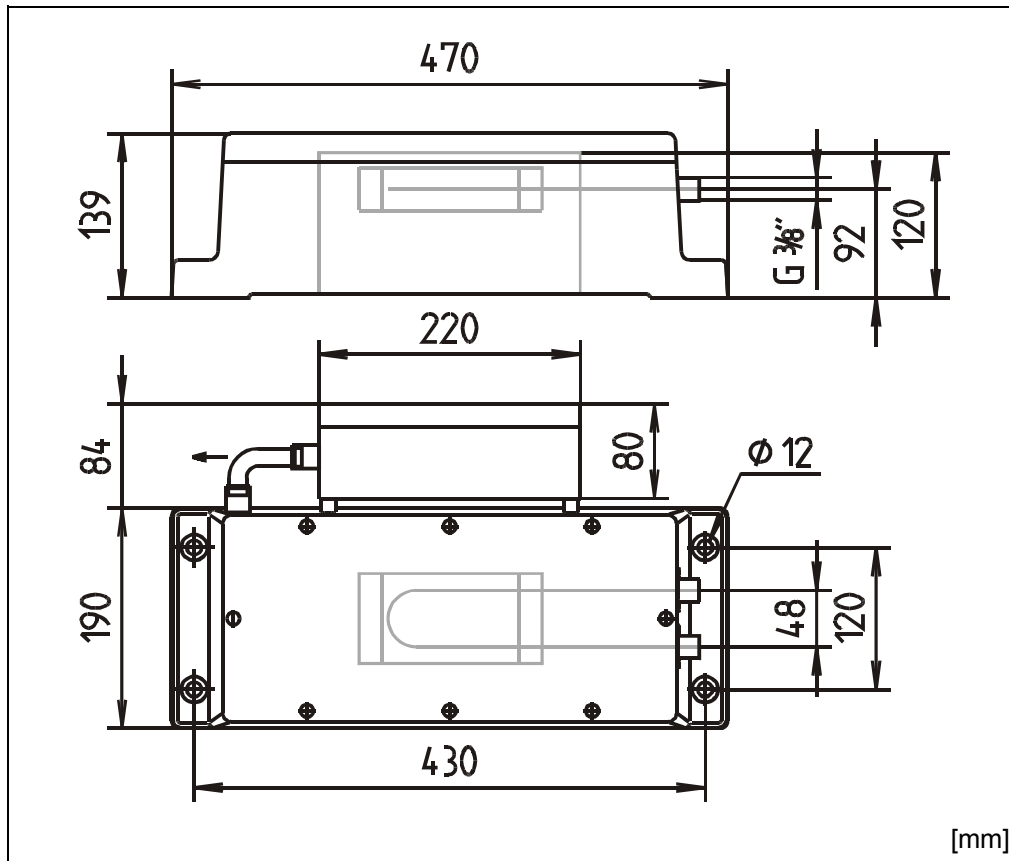
The DPRn 417 / DPRn 427 Density Transducer determines the frequency of oscillation of a U-shaped tube through which the liquid is passed. The temperature is also measured. Both the temperature and frequency values are transmitted via a twin core (shielded) cable to the evaluation unit mPDS 1000 or mPDS 2000. The evaluation unit determines the density or related values such as density at reference temperature or concentration for display or output and control purposes.

## Features and benefits

- High resolution and repeatability up to  $1 \times 10^{-5}$  g/cm<sup>3</sup>, short response time
- High resolution temperature measurement and low thermal inertia
- Virtually no influence of pressure, flow rate and viscosity with appropriate installation
- Pressure drop equivalent to a 500 mm long tube with 6.6 mm internal diameter
- Rugged varnished, cast aluminium housing for operation in hostile environments
- Water proof to IP 65 with appropriate cable connection
- Minimized influence of external vibrations
- Sensors with smooth inner surfaces with possibility of sterilization
- Wetted parts of the instrument made of stainless steel 316 Ti, Hastelloy C 276 (suitable for use with chlorine containing compounds) or Incoloy 825. The material used is from a certified source and can be traced to the certification
- Encapsulated oscillator avoids the danger of condensation on the oscillator tube, minimizing the influence of external conditions, thereby facilitating operation at low temperatures
- Maintenance-free, long operating lifetime with correct usage

## Intrinsic Safety (ATEX)

The intrinsically safe types DPRn 417 / DPRn 427 Density Transducer have EC-Type-Examination Certificates according to 94/9/EC (ATEX) for <Ex> II 1/2 G EEx ia IIC T6, consisting of a certificate for the sensor and for the electronics. It is to be connected to a safety transformer type IPS 501, which is to be installed outside the hazardous area, or directly to the certified intrinsically safe output of the evaluation unit type mPDS 1000.



### Installation

The transducer is to be connected to a vibration-free base using four M10 screws.

A twin core twisted (shielded) cable is utilized to connect the transducer with the evaluation unit. The line resistance must not exceed 100 Ohms.

The connection to the sample loop is effected through G 3/8" (ISO 228 parallel) threads. It is recommended to use a non rigid connection to the pipework in order to avoid the transmission of vibration from the system to the transducer. There are no restrictions concerning the direction of flow through the transducer or the orientation of the transducer. However the risk of gas bubbles and deposition of solids must be taken into account, when deciding on the location for installation.

### Technical specifications

|                                |   |
|--------------------------------|---|
| <b>Sensor</b>                  |   |
| Material                       | stainless steel 316 Ti (DPRn417)<br>Hastelloy C 276 or Incoloy 825 (DPRn427)  |
| Internal diameter              | 6.6 mm  |
| Pipe length                    | ~ 500 mm  |
| Connection to the pipework     | Thread G 3/8" ISO 228 (parallel)  |
| <b>Density</b>                 |   |
| Measuring range                | 0 to 3 g/cm <sup>3</sup>  |
| Repeatability                  | 1x10 <sup>-5</sup> g/cm <sup>3</sup>  |
| Accuracy in the adjusted range | 5x10 <sup>-5</sup> g/cm <sup>3</sup> (Hastelloy type)<br>1x10 <sup>-4</sup> g/cm <sup>3</sup> (other types)<br>at best measuring conditions |
| <b>Temperature</b>             |   |
| Temperature range              | sample -25 to +125 °C (EX: max. +80°C)<br>ambient -25 to + 70 °C (EX: max. +40°C)   |
| Accuracy in the adjusted range | better than 0.1 K   |
| <b>Pressure</b>                |   |
|                                | 0 to 50 bar   |
| <b>Flow rate</b>               |   |
|                                | 100 to 500 l/h / 1000 l/h max.  |
| <b>Dimensions</b>              |   |
| External dimensions            | 470 x 274 x 139 mm (L x W x H)  |
| Mounting dimensions            | 430 x 120 mm (L x W)  |
| <b>Weight</b>                  |   |
|                                | approx. 28 kg   |

All specifications are valid for constant measuring conditions and correct installation. Deviations from the specifications are to be expected for temperature changes of more than 1 K/min.

Specifications subject to change without notice.

### Anton Paar

Anton Paar GmbH, Anton-Paar-Str. 20  
A - 8054 GRAZ, AUSTRIA - EUROPE  
Phone +43 316 257 - 0 e-mail kerschbaumer@anton-paar.com  
Fax +43 316 257 - 257 WWW http://www.anton-paar.com